

Soprano

lo re- sto qui: Ad- di- o! lo re- sto

Alto

lo re- sto qui: Ad- di- o! lo re- sto

Tenor

lo re- sto qui: Ad- di- o! lo re- sto

Bass

Ad- di- o! lo re- sto

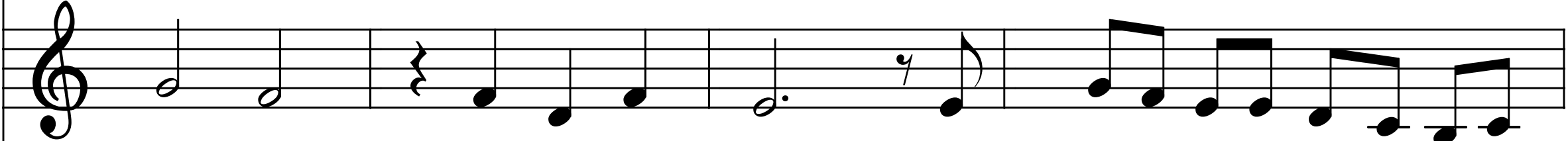
6

**Soprano**



qui: Ad- di- o! sta- not- te mi co-pri-rà la

**Alto**



qui: Ad- di- o! sta- not- te mi co-pri-rà la

**Tenor**



qui: Ad- di- o! sta- not- te mi co-pri-rà la

**Bass**



qui: Ad- di- o! sta- not- te mi co-pri-rà la

Detailed description: This image shows a musical score for four voices: Soprano, Alto, Tenor, and Bass. The score is written in a single system with four staves. Each staff begins with a treble clef (except for the Bass staff which has a bass clef). The lyrics are: "qui: Ad- di- o! sta- not- te mi co-pri-rà la". The Soprano part starts with a whole note 'qui:' followed by a measure with a fermata and a quarter rest, then eighth notes for 'Ad- di- o!', a dotted quarter note for 'o!', and a quarter note for 'sta-'. The Alto part starts with a quarter note for 'qui:', a quarter note for the second measure, a measure with a fermata and a quarter rest, then eighth notes for 'Ad- di- o!', a dotted quarter note for 'o!', and a quarter note for 'sta-'. The Tenor part starts with a whole note 'qui:', a measure with a fermata and a quarter rest, then eighth notes for 'Ad- di- o!', a dotted quarter note for 'o!', and a quarter note for 'sta-'. The Bass part starts with a whole note 'qui:', a measure with a fermata and a quarter rest, then eighth notes for 'Ad- di- o!', a dotted quarter note for 'o!', and a quarter note for 'sta-'. The final two measures of each part are identical: 'not- te mi co-pri-rà la', with 'not-' on a quarter note, 'te mi' on a beamed eighth-note pair, 'co-pri-' on another beamed eighth-note pair, and 'rà la' on a quarter note.

10

**Soprano**

ne- ve e voi che tor- ne- re- te a ca- sa pen- sa- te qual- che

**Alto**

ne- ve e voi che tor- ne- re- te a ca- sa pen- sa- te qual- che

**Tenor**

ne- ve e voi che tor- ne- re- te a ca- sa pen- sa- te qual- che

**Bass**

ne- ve e voi che tor- ne- re- te a ca- sa pen- sa- te qual- che

Detailed description: This image shows a four-part vocal score for Soprano, Alto, Tenor, and Bass. Each part is written on a five-line staff with a treble clef (except for the Bass part which has a bass clef). The lyrics are: "ne- ve e voi che tor- ne- re- te a ca- sa pen- sa- te qual- che". The Soprano part starts with a treble clef and a key signature of one sharp (F#). The Alto part starts with a treble clef and a key signature of one sharp. The Tenor part starts with a treble clef and a key signature of one sharp. The Bass part starts with a bass clef and a key signature of one sharp. The lyrics are aligned under the notes. The number "10" is written at the top left of the Soprano staff.

Soprano



vol- ta a que- sto cie- lo a que- sto cie- lo di Rus- sia.

Alto



vol- ta a que- sto cie- lo a que- sto cie- lo di Rus- sia.

Tenor



vol- ta a que- sto cie- lo a que- sto cie- lo di Rus- sia.

Bass



vol- ta a que- sto cie- lo a que- sto cie- lo di Rus- sia.

16

Soprano

lo re- sto qui: Ad- di- o! lo re- sto

Alto

lo re- sto qui: Ad- di- o! lo re- sto

Tenor

lo re- sto qui: Ad- di- o! lo re- sto

Bass

Ad- di- o! lo re- sto

Soprano

qui: Ad- di- o! con al- tri a- mi- ci in que- sta

Alto

qui: Ad- di- o! con al- tri a- mi- ci in que- sta

Tenor

qui: Ad- di- o! con al- tri a- mi- ci in que- sta

Bass

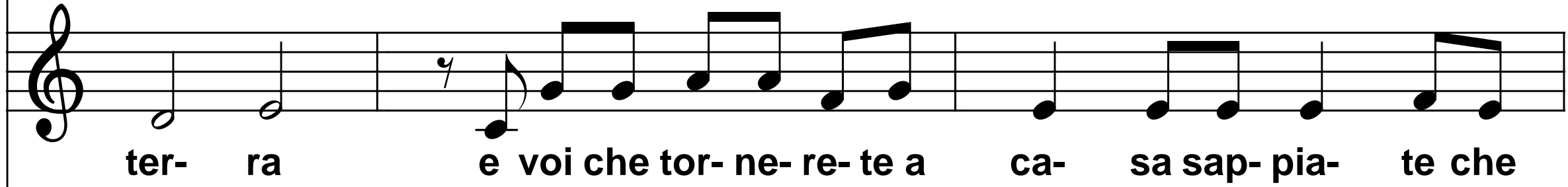
qui: Ad- di- o! con al- tri a- mi- ci in que- sta

Soprano



ter- ra e voi che tor- ne- re- te a ca- sa sap- pia- te che

Alto



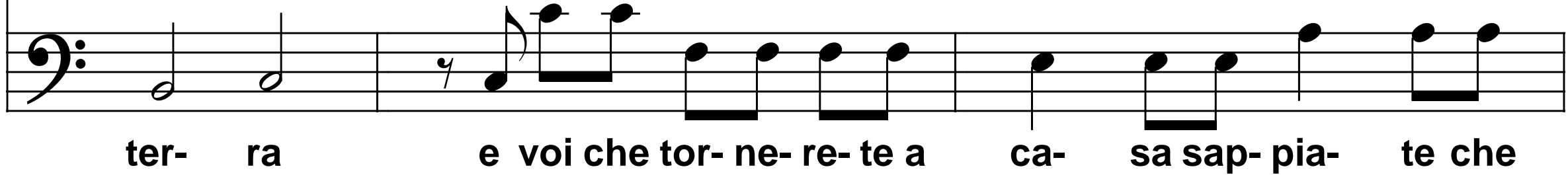
ter- ra e voi che tor- ne- re- te a ca- sa sap- pia- te che

Tenor



ter- ra e voi che tor- ne- re- te a ca- sa sap- pia- te che

Bass



ter- ra e voi che tor- ne- re- te a ca- sa sap- pia- te che

Soprano

Musical notation for the Soprano voice part, measures 28-30. The staff is in treble clef. Measure 28 contains six eighth notes: G4, A4, B4, C5, B4, A4. Measure 29 contains a quarter note G4, a quarter note A4 with a sharp sign, a quarter note B4, a quarter note C5, and a quarter note B4. Measure 30 contains a quarter note A4, a quarter note G4, a quarter note F4, a quarter note E4, and a half note D4.

qui, an- che qui do- ve ri- po- so in que- sto cam- po vi- ci- no al bo-

Alto

Musical notation for the Alto voice part, measures 28-30. The staff is in treble clef. Measure 28 contains six eighth notes: G4, A4, B4, C5, B4, A4. Measure 29 contains a quarter note G4, a quarter note A4 with a sharp sign, a quarter note B4, a quarter note C5, and a quarter note B4. Measure 30 contains a quarter note A4, a quarter note G4, a quarter note F4, a quarter note E4, and a half note D4 with a sharp sign.

qui, an- che qui do- ve ri- po- so in que- sto cam- po vi- ci- no al bo-

Tenor

Musical notation for the Tenor voice part, measures 28-30. The staff is in treble clef. Measure 28 contains six eighth notes: G4, A4, B4, C5, B4, A4. Measure 29 contains a quarter note G4, a quarter note A4, a quarter note B4, a quarter note C5, and a quarter note B4. Measure 30 contains a quarter note A4, a quarter note G4, a quarter note F4, a quarter note E4, and a half note D4.

qui, an- che qui do- ve ri- po- so in que- sto cam- po vi- ci- no al bo-

Bass

Musical notation for the Bass voice part, measures 28-30. The staff is in bass clef. Measure 28 contains six eighth notes: G3, A3, B3, C4, B3, A3. Measure 29 contains a quarter note G3, a quarter note A3, a quarter note B3, a quarter note C4, and a quarter note B3. Measure 30 contains a quarter note A3, a quarter note G3, a quarter note F3, a quarter note E3, and a half note D3 with a sharp sign.

qui, an- che qui do- ve ri- po- so in que- sto cam- po vi- ci- no al bo-



Soprano

Musical notation for the Soprano voice part, measures 31-34. The staff uses a treble clef and a common time signature. The melody begins with a dotted half note on G4, followed by a quarter rest. The second measure contains a quarter note on A4, a quarter note on B4, and a half note on C5. The third measure contains a whole note on C5. The fourth measure begins with a quarter rest, followed by a quarter note on B4, a quarter note on A4, a quarter note on G4, and a quarter note on F4.

sco

di be- tul-

le

ver- rà la pri- ma-

Alto

Musical notation for the Alto voice part, measures 31-34. The staff uses a treble clef and a common time signature. The melody begins with a dotted half note on G4 with a sharp sign, followed by a quarter rest. The second measure contains a quarter note on A4, a quarter note on B4, and a half note on C5. The third measure contains a whole note on C5. The fourth measure begins with a quarter rest, followed by a quarter note on B4, a quarter note on A4, a quarter note on G4, and a quarter note on F4.

sco

di be- tul-

le

ver- rà la pri- ma-

Tenor

Musical notation for the Tenor voice part, measures 31-34. The staff uses a treble clef and a common time signature. The melody begins with a dotted half note on G4, followed by a quarter rest. The second measure contains a quarter note on A4, a quarter note on B4, and a half note on C5. The third measure contains a whole note on C5. The fourth measure begins with a quarter rest, followed by a quarter note on B4, a quarter note on A4, a quarter note on G4, and a quarter note on F4.

sco

di be- tul-

le

ver- rà la pri- ma-

Bass

Musical notation for the Bass voice part, measures 31-34. The staff uses a bass clef and a common time signature. The melody begins with a dotted half note on G3 with a sharp sign, followed by a quarter rest. The second measure contains a quarter note on A3 with a flat sign, a quarter note on B3, and a half note on C4. The third measure contains a whole note on C4. The fourth measure begins with a quarter rest, followed by a quarter note on B3, a quarter note on A3, a quarter note on G3, and a quarter note on F3.

sco

di be- tul-

le

ver- rà la pri- ma-

Soprano

ve- ra, ver- rà la pri- ma- ve- ra, ver- rà la pri- ma- ve- ra... uh

Alto

ve- ra, ver- rà la pri- ma- ve- ra, ver- rà la pri- ma- ve- ra... uh

Tenor

ve- ra, ver- rà la pri- ma- ve- ra, ver- rà la pri- ma- ve- ra... uh

Bass

ve- ra, ver- rà la pri- ma- ve- ra, ver- rà la pri- ma- ve- ra... uh

39

Soprano

uh uh uh uh uh uh uh uh uh uh uh uh

Alto

uh uh uh uh uh uh uh uh uh uh uh uh

Tenor

Bass

**Soprano**

uh uh uh Ad- di- o!

The Soprano part begins with a whole note 'uh' on the first staff. The second staff contains two measures of eighth notes: 'uh uh' with a fermata over the first note. The third staff has a whole note 'uh'. The fourth staff has two measures of eighth notes: 'Ad- di-' with a fermata over the first note. The fifth staff has two measures of quarter notes: 'o!' with a fermata over the first note. The final measure of the system contains a whole note chord with two notes.

**Alto**

uh uh uh Ad- di- o!

The Alto part begins with a whole note 'uh' on the first staff. The second staff contains two measures of eighth notes: 'uh uh' with a fermata over the first note. The third staff has a whole note 'uh'. The fourth staff has two measures of eighth notes: 'Ad- di-' with a fermata over the first note. The fifth staff has two measures of quarter notes: 'o!' with a fermata over the first note. The final measure of the system contains a whole note chord with two notes.

**Tenor**

Ad- di- o!

The Tenor part begins with a whole note on the first staff, followed by a slur over the next two measures. The third staff has a whole note. The fourth staff has two measures of eighth notes: 'Ad- di-' with a fermata over the first note. The fifth staff has two measures of quarter notes: 'o!' with a fermata over the first note. The final measure of the system contains a whole note chord with two notes.

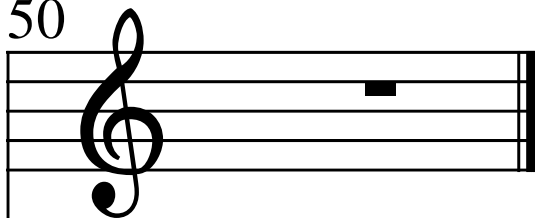
**Bass**

Ad- di- o!

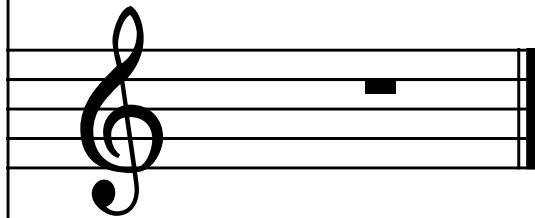
The Bass part begins with a whole note on the first staff, followed by a slur over the next two measures. The third staff has a whole note. The fourth staff has two measures of eighth notes: 'Ad- di-' with a fermata over the first note. The fifth staff has two measures of quarter notes: 'o!' with a fermata over the first note. The final measure of the system contains a whole note chord with two notes.

50

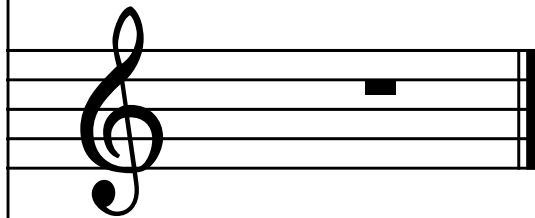
**Soprano**



**Alto**



**Tenor**



**Bass**

