



Soprano

bon, E me ma- ri' l'e' bon e

Alto

bon, E me ma- ri' l'e' bon e

Tenor

...l'e' bon... E me ma- ri' l'e' bon e

Bass

...l'e' bon... E me ma- ri' l'e' bon, l'e' bon, E me ma- ri' l'e'

Soprano

8

l'e' tre vol- te bon, el sa- bo e la do- me- ne- ga, el

Detailed description: This block contains the musical notation for the Soprano voice part, measures 8 through 11. The notation is on a single treble clef staff. Measure 8 starts with a treble clef and a key signature of one flat (B-flat). The melody consists of quarter notes: G4, A4, B4, C5. Measure 9 continues with a dotted quarter note G4, followed by quarter notes A4 and B4, all under a slur. Measure 10 has quarter notes C5, B4, A4, G4. Measure 11 has quarter notes F4, E4, D4, C4.

Alto

l'e' tre vol- te bon, el sa- bo e la do- me- ne- ga, el

Detailed description: This block contains the musical notation for the Alto voice part, measures 8 through 11. The notation is on a single treble clef staff. Measure 8 starts with a treble clef and a key signature of one flat (B-flat). The melody consists of quarter notes: G4, A4, B4, C5. Measure 9 continues with a dotted quarter note G4, followed by quarter notes A4 and B4, all under a slur. Measure 10 has quarter notes C5, B4, A4, G4. Measure 11 has quarter notes F4, E4, D4, C4.

Tenor

l'e' tre vol- te bon, el sa- bo e la do- me- ne- ga, el

Detailed description: This block contains the musical notation for the Tenor voice part, measures 8 through 11. The notation is on a single treble clef staff. Measure 8 starts with a treble clef and a key signature of one flat (B-flat). The melody consists of quarter notes: G4, A4, B4, C5. Measure 9 continues with a dotted quarter note G4, followed by quarter notes A4 and B4, all under a slur. Measure 10 has quarter notes C5, B4, A4, G4. Measure 11 has quarter notes F4, E4, D4, C4.

Bass

bon, l'e' bon, e l'e' tre vol- te bon, a la do- me- ne- ga'l

Detailed description: This block contains the musical notation for the Bass voice part, measures 8 through 11. The notation is on a single bass clef staff. Measure 8 starts with a bass clef and a key signature of one flat (B-flat). The melody consists of quarter notes: G3, A3, B3, C4. Measure 9 continues with a dotted quarter note G3, followed by quarter notes A3 and B3, all under a slur. Measure 10 has quarter notes C4, B3, A3, G3. Measure 11 has quarter notes F3, E3, D3, C3.

Soprano

sa-bo e la do-me-ne-ga, E me ma-ri' l'e' bon e

Alto

sa-bo e la do-me-ne-ga, E me ma-ri' l'e' bon e

Tenor

sa-bo e la do-me-ne-ga, E me ma-ri' l'e' bon e

Bass

sa-bo e la do-me-ne-ga, do-me-ne-ga, E me ma-ri' l'e'

16

Soprano

Musical notation for the Soprano part, measures 16-19. The staff uses a treble clef and a common time signature. The melody consists of quarter notes and eighth notes, with a dotted quarter note in measure 17. A slur covers the notes in measures 17 and 18.

**l'e' tre vol- te bon, el sa- bo e la do- me- ne- ga 'l me**

Alto

Musical notation for the Alto part, measures 16-19. The staff uses a treble clef and a common time signature. The melody consists of quarter notes and eighth notes, with a dotted quarter note in measure 17. A slur covers the notes in measures 17 and 18.

**l'e' tre vol- te bon, el sa- bo e la do- me- ne- ga 'l me**

Tenor

Musical notation for the Tenor part, measures 16-19. The staff uses a treble clef and a common time signature. The melody consists of quarter notes and eighth notes, with a dotted quarter note in measure 17. A slur covers the notes in measures 17 and 18.

**l'e' tre vol- te bon, el sa- bo e la do- me- ne- ga 'l me**

Bass

Musical notation for the Bass part, measures 16-19. The staff uses a bass clef and a common time signature. The melody consists of quarter notes and eighth notes.

**bon, l'e' bon, e l'e' tre vol- te bon, a la do- me- ne- ga 'l me**

Soprano

Musical notation for Soprano voice part, measures 20-23. The staff uses a treble clef and a key signature of one flat (B-flat). The melody consists of quarter notes in measures 20-21, a dotted quarter note in measure 22, a quarter rest in measure 23, and quarter notes in measures 24-26.

pa- ga col bas- ton!

...e l'a- mor...

Alto

Musical notation for Alto voice part, measures 20-23. The staff uses a treble clef and a key signature of one flat (B-flat). The melody consists of quarter notes in measures 20-21, a dotted quarter note in measure 22, a quarter rest in measure 23, and quarter notes in measures 24-26.

pa- ga col bas- ton!

...e l'a- mor...

Tenor

Musical notation for Tenor voice part, measures 20-23. The staff uses a treble clef and a key signature of one flat (B-flat). The melody consists of quarter notes in measures 20-21, a dotted quarter note in measure 22, a quarter rest in measure 23, and quarter notes in measures 24-26.

pa- ga col bas- ton!

...e l'a- mor...

Bass

Musical notation for Bass voice part, measures 20-23. The staff uses a bass clef and a key signature of one flat (B-flat). The melody consists of quarter notes in measures 20-21, a dotted quarter note in measure 22, eighth notes in measure 23, and quarter notes in measures 24-26.

pa- ga col bas- ton! E vi- va l'a- mor e l'a-

Soprano

Musical notation for the Soprano voice part, measures 23-25. The staff is in treble clef with a key signature of one flat (B-flat). Measure 23 contains a quarter rest followed by a quarter note G4, a quarter note A4, and a quarter note G4 with a fermata. Measure 24 contains a quarter rest followed by quarter notes G4, F4, E4, D4, and C4. Measure 25 contains a half note G4 with a fermata.

...e l'a- mor...

...e l'a- mor e l'a-

mor...

Alto

Musical notation for the Alto voice part, measures 23-25. The staff is in treble clef with a key signature of one flat (B-flat). Measure 23 contains a quarter rest followed by a quarter note G4, a quarter note A4, and a quarter note G4 with a fermata. Measure 24 contains a quarter rest followed by quarter notes G4, F4, E4, D4, and C4. Measure 25 contains a half note G4 with a fermata.

...e l'a- mor...

...e l'a- mor e l'a-

mor...

Tenor

Musical notation for the Tenor voice part, measures 23-25. The staff is in treble clef with a key signature of one flat (B-flat). Measure 23 contains a quarter rest followed by a quarter note G4, a quarter note A4, and a quarter note G4 with a fermata. Measure 24 contains a quarter rest followed by quarter notes G4, F4, E4, D4, and C4. Measure 25 contains a half note G4 with a fermata.

...e l'a- mor...

...e l'a- mor e l'a-

mor...

Bass

Musical notation for the Bass voice part, measures 23-25. The staff is in bass clef with a key signature of one flat (B-flat). Measure 23 contains a half note G2 with a fermata. Measure 24 contains quarter notes F2, E2, D2, C2, and B1. Measure 25 contains quarter notes A1, G1, F1, E1, and D1.

mor

e l'a-

mor

che vien, che

va,

E vi- va l'a-

Soprano

Musical notation for the Soprano voice part, measures 26-28. The staff is in treble clef with a key signature of one flat (B-flat). The melody consists of quarter notes and eighth notes. Measure 26: B-flat, A, G. Measure 27: B-flat, A, G. Measure 28: B-flat, A, G, F, E, D.

...e l'a- mor...

...e l'a- mor...

...e l'a- mor e l'a-

Alto

Musical notation for the Alto voice part, measures 26-28. The staff is in treble clef with a key signature of one flat (B-flat). The melody consists of quarter notes and eighth notes. Measure 26: B-flat, A, G. Measure 27: B-flat, A, G. Measure 28: B-flat, A, G, F, E, D.

...e l'a- mor...

...e l'a- mor...

...e l'a- mor e l'a-

Tenor

Musical notation for the Tenor voice part, measures 26-28. The staff is in treble clef with a key signature of one flat (B-flat). The melody consists of quarter notes and eighth notes. Measure 26: B-flat, A, G. Measure 27: B-flat, A, G. Measure 28: B-flat, A, G, F, E, D.

...e l'a- mor...

...e l'a- mor...

...e l'a- mor e l'a-

Bass

Musical notation for the Bass voice part, measures 26-28. The staff is in bass clef with a key signature of one flat (B-flat). The melody consists of quarter notes and eighth notes. Measure 26: G, F, E. Measure 27: G, F, E. Measure 28: G, F, E, D, C, B.

mor

e l'a-

mor

e l'a-

mor

che vien, che



Soprano

mor... e vi-va l'a- mor e l'a- mor e l'a- mor che vien, che

Alto

mor... e vi-va l'a- mor e l'a- mor e l'a- mor che vien, che

Tenor

mor... e vi-va l'a- mor e l'a- mor e l'a- mor che vien, che

Bass

va, E vi-va l'a- mor e l'a- mor e l'a- mor che vien che

Soprano

Musical notation for the Soprano voice part, measures 33-36. The staff is in treble clef with a key signature of one flat (B-flat). The melody consists of quarter and eighth notes, with some beamed eighth notes. The phrase ends with a fermata over a dotted quarter note.

va, e vi-va l'a- mor e vi-va l'a- mor e chi lo sa far

Alto

Musical notation for the Alto voice part, measures 33-36. The staff is in treble clef with a key signature of one flat (B-flat). The melody consists of quarter and eighth notes, with some beamed eighth notes. The phrase ends with a fermata over a dotted quarter note.

va, e vi-va l'a- mor e vi-va l'a- mor e chi lo sa far

Tenor

Musical notation for the Tenor voice part, measures 33-36. The staff is in treble clef with a key signature of one flat (B-flat). The melody consists of quarter and eighth notes, with some beamed eighth notes. The phrase ends with a fermata over a dotted quarter note.

va, e vi-va l'a- mor e vi-va l'a- mor e chi lo sa far

Bass

Musical notation for the Bass voice part, measures 33-36. The staff is in bass clef with a key signature of one flat (B-flat). The melody consists of quarter and eighth notes, with some beamed eighth notes. The phrase ends with a fermata over a dotted quarter note.

va, e vi-va l'a- mor e vi-va l'a- mor e chi lo sa far Nu'

Soprano

Musical notation for the Soprano voice part, measures 37-40. The staff is in treble clef with a key signature of one flat (B-flat). The melody consists of quarter notes and eighth notes, with a slur over the final two notes of the phrase.

No' la me vol pi ben, la me da'zo'l ve-

Alto

Musical notation for the Alto voice part, measures 37-40. The staff is in treble clef with a key signature of one flat (B-flat). The melody consists of quarter notes and eighth notes, with a slur over the final two notes of the phrase.

No' la me vol pi ben, la me da'zo'l ve-

Tenor

Musical notation for the Tenor voice part, measures 37-40. The staff is in treble clef with a key signature of one flat (B-flat). The melody consists of quarter notes and eighth notes, with a slur over the final two notes of the phrase.

No' la me vol pi ben, la me da'zo'l ve-

Bass

Musical notation for the Bass voice part, measures 37-40. The staff is in bass clef with a key signature of one flat (B-flat). The melody consists of quarter notes and eighth notes.

la me vol pi' ben, pi' ben, no' la me vol pi' ben, pi' ben la

Soprano

len, la prega di e not che cre- e- pe, la prega di e not che

Alto

len, la prega di e not che cre- e- pe, la prega di e not che

Tenor

len, la prega di e not che cre- e- pe, la prega di e not che

Bass

me da' zo' l ve- len... di' e not che cre- pe, la prega di' e not che

Soprano

Musical notation for the Soprano voice part, measures 45-48. The staff uses a treble clef and a common time signature. The melody consists of quarter notes and eighth notes, with a dotted quarter note and eighth note pair in measure 47, and a slur over the final two notes of measure 48.

cre- e- pe, No' la me vol pi ben, la me da zo'l ve-

Alto

Musical notation for the Alto voice part, measures 45-48. The staff uses a treble clef and a common time signature. The melody consists of quarter notes and eighth notes, with a dotted quarter note and eighth note pair in measure 47, and a slur over the final two notes of measure 48.

cre- e- pe, No' la me vol pi ben, la me da zo'l ve-

Tenor

Musical notation for the Tenor voice part, measures 45-48. The staff uses a treble clef and a common time signature. The melody consists of quarter notes and eighth notes, with a dotted quarter note and eighth note pair in measure 47, and a slur over the final two notes of measure 48.

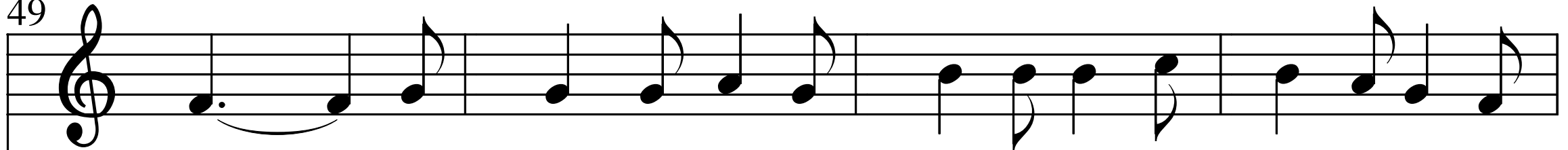
cre- e- pe, No' la me vol pi ben, la me da zo'l ve-

Bass

Musical notation for the Bass voice part, measures 45-48. The staff uses a bass clef and a common time signature. The melody consists of quarter notes and eighth notes, with a dotted quarter note and eighth note pair in measure 47, and a slur over the final two notes of measure 48.

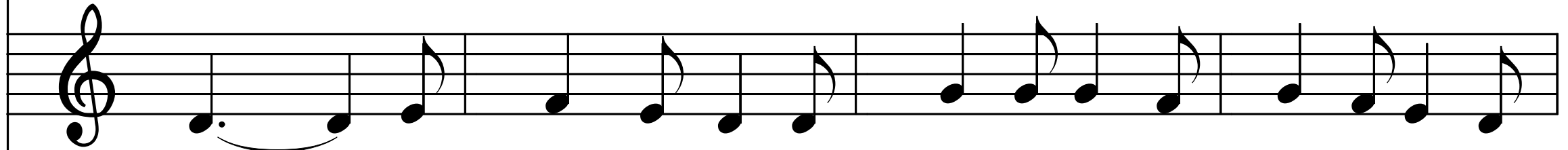
cre- e- pe, che cre- e- pe, no' la me vol pi' ben, pi' ben, la

Soprano



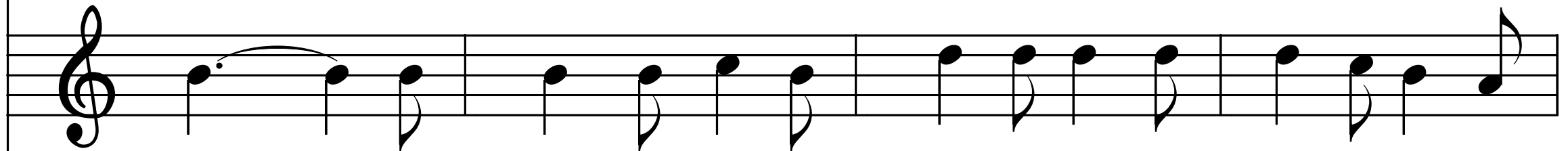
len, la prega di e not che cre- e-pe,, e in- ve- ze mi sto

Alto



len, la prega di e not che cre- e-pe,, e in- ve- ze mi sto

Tenor



len, la prega di e not che cre- e-pe,, e in- ve- ze mi sto

Bass



me da zo'l ve- len... di' e not che cre- e-pe, e in- ve- ze mi sto

Soprano

ben! ...e l'a- mor... ...e l'a- mor...

Alto

ben! ...e l'a- mor... ...e l'a- mor...

Tenor

ben! ...e l'a- mor... ...e l'a- mor...

Bass

ben! E vi- va l'a- mor e l'a- mor e l'a-

Soprano

Musical notation for Soprano voice part, measures 56-58. The staff is in treble clef with a key signature of one flat (B-flat). Measure 56 contains a quarter rest followed by four eighth notes: G4, A4, Bb4, and A4. Measure 57 contains a dotted half note G4. Measure 58 contains a quarter rest followed by three eighth notes: G4, A4, and Bb4.

...e l'a- mor e l'a- mor...

...e l'a- mor...

Alto

Musical notation for Alto voice part, measures 56-58. The staff is in treble clef with a key signature of one flat (B-flat). Measure 56 contains a quarter rest followed by four eighth notes: G4, A4, Bb4, and A4. Measure 57 contains a dotted half note G4. Measure 58 contains a quarter rest followed by three eighth notes: G4, A4, and Bb4.

...e l'a- mor e l'a- mor...

...e l'a- mor...

Tenor

Musical notation for Tenor voice part, measures 56-58. The staff is in treble clef with a key signature of one flat (B-flat). Measure 56 contains a quarter rest followed by four eighth notes: G4, A4, Bb4, and A4. Measure 57 contains a dotted half note G4. Measure 58 contains a quarter rest followed by three eighth notes: G4, A4, and Bb4.

...e l'a- mor e l'a- mor...

...e l'a- mor...

Bass

Musical notation for Bass voice part, measures 56-58. The staff is in bass clef with a key signature of one flat (B-flat). Measure 56 contains four quarter notes: G3, A3, Bb3, and A3. Measure 57 contains a quarter note G3, a quarter note A3, and an eighth-note pair (Bb3, A3). Measure 58 contains a dotted half note G3, a quarter note A3, and an eighth-note pair (Bb3, A3).

mor che vien, che va, E vi- va l'a- mor e l'a-



Soprano

Musical notation for the Soprano part, measures 59-61. The staff is in treble clef with a key signature of one flat (B-flat). Measure 59 contains a half note G4, a quarter note F4, and a dotted quarter note E4. Measure 60 contains a quarter note G4, a quarter note F4, a quarter note E4, a quarter note D4, and a quarter note C4. Measure 61 contains a half note G4, a quarter note F4, a quarter note E4, a quarter note D4, and a quarter note C4.

...e l'a- mor...      ...e l'a- mor e l'a-      mor... e vi- va l'a-

Alto

Musical notation for the Alto part, measures 59-61. The staff is in treble clef with a key signature of one flat (B-flat). Measure 59 contains a half note G4, a quarter note F4, and a dotted quarter note E4. Measure 60 contains a quarter note G4, a quarter note F4, a quarter note E4, a quarter note D4, and a quarter note C4. Measure 61 contains a half note G4, a quarter note F4, a quarter note E4, a quarter note D4, and a quarter note C4.

...e l'a- mor...      ...e l'a- mor e l'a-      mor... e vi- va l'a-

Tenor

Musical notation for the Tenor part, measures 59-61. The staff is in treble clef with a key signature of one flat (B-flat). Measure 59 contains a half note G4, a quarter note F4, and a dotted quarter note E4. Measure 60 contains a quarter note G4, a quarter note F4, a quarter note E4, a quarter note D4, and a quarter note C4. Measure 61 contains a half note G4, a quarter note F4, a quarter note E4, a quarter note D4, and a quarter note C4.

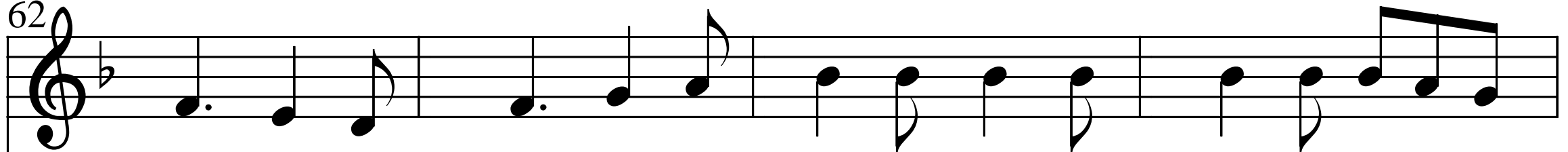
...e l'a- mor...      ...e l'a- mor e l'a-      mor... e vi- va l'a-

Bass

Musical notation for the Bass part, measures 59-61. The staff is in bass clef with a key signature of one flat (B-flat). Measure 59 contains a dotted half note G3. Measure 60 contains a half note F3, a quarter note E3, a quarter note D3, a quarter note C3, and a quarter note B2. Measure 61 contains a half note G3, a quarter note F3, a quarter note E3, a quarter note D3, and a quarter note C3.

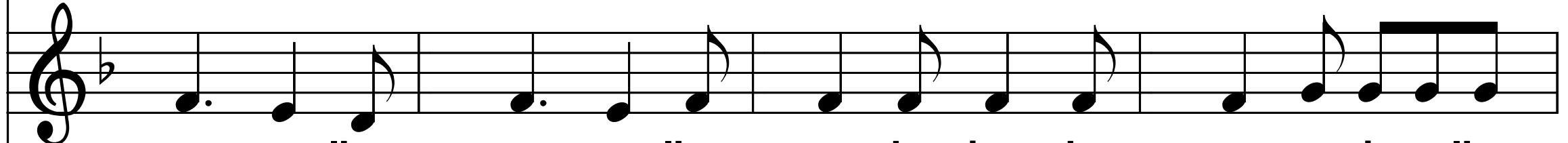
mor      e l'a-      mor      che vien,      che      va,      E vi- va l'a-

Soprano



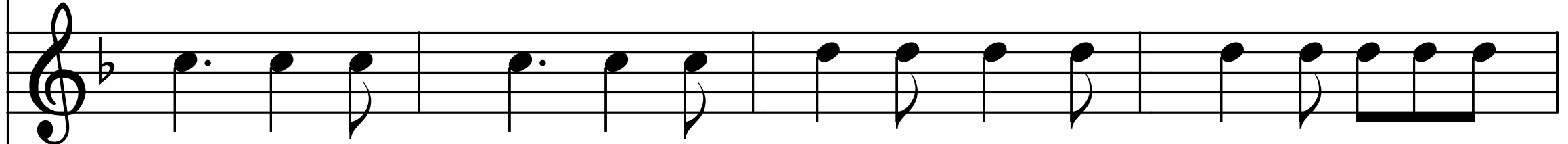
mor e l'a- mor e l'a- mor che vien, che va, e vi- va l'a-

Alto



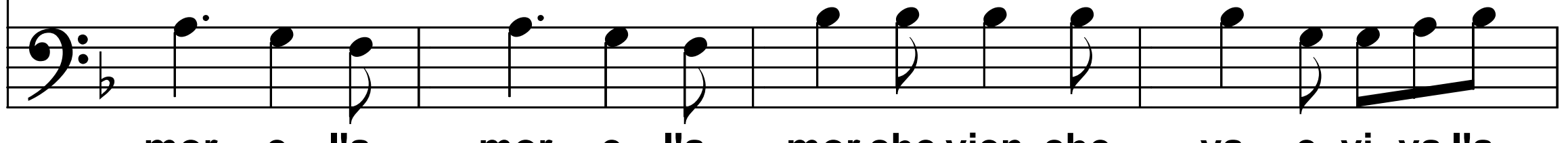
mor e l'a- mor e l'a- mor che vien, che va, e vi- va l'a-

Tenor



mor e l'a- mor e l'a- mor che vien, che va, e vi- va l'a-

Bass



mor e l'a- mor e l'a- mor che vien, che va, e vi- va l'a-

Soprano

66

mor e vi- va l'a- mor e chi lo sa far

Alto

mor e vi- va l'a- mor e chi lo sa far

Tenor

mor e vi- va l'a- mor e chi lo sa far

Bass

mor e vi- va l'a- mor e chi lo sa far E vi- va l'a

70

**Soprano**

me ma-ri' l'e' bon e l'e' tre vol- te

**Alto**

vi... e vi... e vi... e vi... e vi... e vi... e

**Tenor**

vi... e vi... e vi... e vi... e vi... e vi... e

**Bass**

-mor che vien, che va, E vi-va l'a- mor che vien, che

Soprano



bon, el sa- bo e la do- me- ne- ga, el

Alto



vi- va l'a- mor, e vi... e vi... e vi... e vi... e

Tenor



vi- va l'a- mor, e vi... e vi... e vi... e vi... e

Bass



va, E vi- va l'a- mor che vien, che va, E vi- va l'a-

Soprano

sa-bo e la do- me- ne- ga, E me ma- ri' l'e' bon e

Alto

vi... e vi... e vi- va l'a- mor, e me ma- ri' l'e' bon e

Tenor

vi... e vi... e vi- va l'a- mor, e me ma- ri' l'e' bon e

Bass

mor che vien, che va, che vien, che va, che va, E me ma- ri' l'e'

80

Soprano

Musical notation for the Soprano part, measures 80-83. The staff is in treble clef. The melody consists of quarter notes in measures 80-81, followed by a dotted quarter note and an eighth note in measure 82, and quarter notes in measure 83. A slur covers the dotted quarter and eighth note in measure 82.

**l'e' tre vol- te bon, el sa-bo e la do- me-ne-ga 'l me**

Alto

Musical notation for the Alto part, measures 80-83. The staff is in treble clef. The melody consists of quarter notes in measures 80-81, followed by a dotted quarter note and an eighth note in measure 82, and quarter notes in measure 83. A slur covers the dotted quarter and eighth note in measure 82.

**l'e' tre vol- te bon, el sa-bo e la do- me-ne-ga 'l me**

Tenor

Musical notation for the Tenor part, measures 80-83. The staff is in treble clef. The melody consists of quarter notes in measures 80-81, followed by a dotted quarter note and an eighth note in measure 82, and quarter notes in measure 83. A slur covers the dotted quarter and eighth note in measure 82.

**l'e' tre vol- te bon, el sa-bo e la do- me-ne-ga 'l me**

Bass

Musical notation for the Bass part, measures 80-83. The staff is in bass clef. The melody consists of quarter notes in measures 80-81, followed by quarter notes in measure 82, and quarter notes in measure 83.

**bon, l'e' bon, e l'e' tre vol- te bon, a la do- me-ne-ga 'l me**

Soprano

pa- ga col bas- ton! No\ la me vol pi ben, la

Alto

pa- ga col bas- ton La\ la la la la la la la la

Tenor

pa- ga col bas- ton La\ la la la la la la la la

Bass

pa- ga col bas- ton!\ Lo lo lo lo\ lo lo lo lo lo lo lo lo lo



Soprano

me da' zo'l ve- len, la pregadi e not che cre- e- pe, la

Alto

la la la e vi- va l'a- mor la la la la la la la la

Tenor

la la la e vi- va l'a- mor la la la la la la la la

Bass

lo lo lo lo lo lo lo lo lo lo lo lo lo lo lo lo

Soprano

Musical notation for the Soprano part, measures 92-95. The staff uses a treble clef and contains a sequence of eighth and quarter notes with a final dotted half note.

prega di e not che cre- e- pe, No' la me vol pi ben, la

Alto

Musical notation for the Alto part, measures 92-95. The staff uses a treble clef and contains a sequence of eighth and quarter notes with a final dotted half note.

la la la e vi- va l'a- mor\ No' la me vol pi ben, la

Tenor

Musical notation for the Tenor part, measures 92-95. The staff uses a treble clef and contains a sequence of eighth and quarter notes with a final dotted half note.

la la la e vi- va l'a- mor\ No' la me vol pi ben, la

Bass

Musical notation for the Bass part, measures 92-95. The staff uses a bass clef and contains a sequence of eighth and quarter notes.

lo lo lo lo lo lo lo lo lo no' la me vol pi'

96

Soprano

me da zo'l ve- len, la prega di e not che cre- pe,

Alto

me da zo'l ve- len, la prega di e not che cre- pe,

Tenor

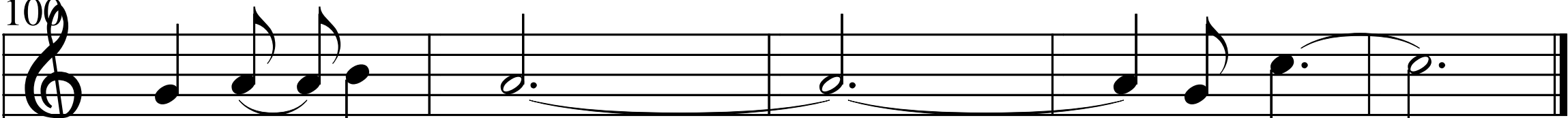
me da zo'l ve- len, la prega di e not che cre- pe,

Bass

ben, pi' ben, la me da' zo''l ve- len... di' e not che cre- pe

100

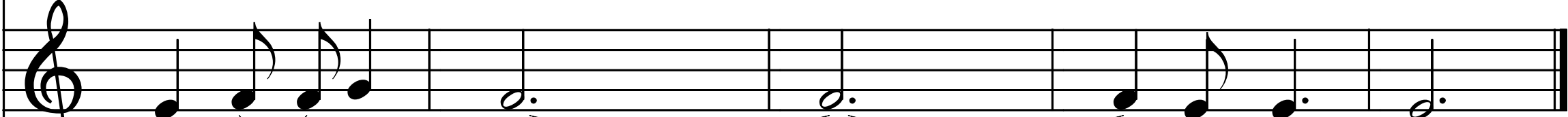
**Soprano**



e in-ve- ze mi sto ben!\

Detailed description: This block contains the musical notation for the Soprano voice part. It features a treble clef and a key signature of one flat. The melody begins with a quarter rest, followed by a quarter note G4, a quarter note A4, and a quarter note B4, all beamed together. This is followed by a quarter note C5. The next measure contains a half note G4. The following two measures contain a half note F4. The final measure contains a quarter note G4, a quarter note A4, and a quarter note B4, all beamed together, followed by a quarter note C5. The lyrics are aligned with the notes: "e in-ve- ze mi sto ben!\".


**Alto**



e in-ve- ze mi sto ben.\

Detailed description: This block contains the musical notation for the Alto voice part. It features a treble clef and a key signature of one flat. The melody begins with a quarter rest, followed by a quarter note G4, a quarter note A4, and a quarter note B4, all beamed together. This is followed by a quarter note C5. The next measure contains a half note G4. The following two measures contain a half note F4. The final measure contains a quarter note G4, a quarter note A4, and a quarter note B4, all beamed together, followed by a quarter note C5. The lyrics are aligned with the notes: "e in-ve- ze mi sto ben.\".

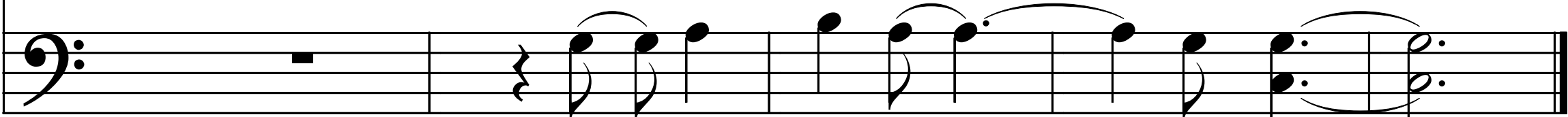
**Tenor**



no' la mi vol pi' ben.\

Detailed description: This block contains the musical notation for the Tenor voice part. It features a treble clef and a key signature of one flat. The melody begins with a quarter rest, followed by a quarter note G3, a quarter note A3, and a quarter note B3, all beamed together. This is followed by a quarter note C4. The next measure contains a half note G3. The following two measures contain a half note F3. The final measure contains a quarter note G3, a quarter note A3, and a quarter note B3, all beamed together, followed by a quarter note C4. The lyrics are aligned with the notes: "no' la mi vol pi' ben.\".

**Bass**



no' la mi vol pi' ben.\

Detailed description: This block contains the musical notation for the Bass voice part. It features a bass clef and a key signature of one flat. The melody begins with a quarter rest, followed by a quarter note G2, a quarter note A2, and a quarter note B2, all beamed together. This is followed by a quarter note C3. The next measure contains a half note G2. The following two measures contain a half note F2. The final measure contains a quarter note G2, a quarter note A2, and a quarter note B2, all beamed together, followed by a quarter note C3. The lyrics are aligned with the notes: "no' la mi vol pi' ben.\".